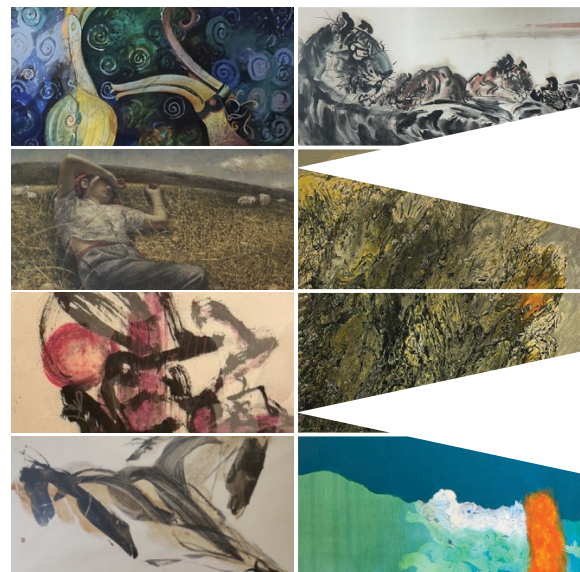


**HELD IN TIME,
BUILT ON TRUST**



THE MAYBANK ART COLLECTION EXHIBITION



**11.2.2026–17.4.2026
BALAI SENI MAYBANK,
MENARA MAYBANK, KL**

In partnership with

fakigani

Humanising
Financial Services

Presented By



Implementing Partner



*HELD
IN TIME,
BUILT
ON
TRUST:*

THE MAYBANK ART COLLECTION

FOREWORD BY

IZLYN RAMLI

HEAD, GROUP CORPORATE AFFAIRS MAYBANK
& CEO OF MAYBANK FOUNDATION

Assalamualaikum warahmatullahi wabarakatuh

The Maybank Art Collection Exhibition (MACE) marks an important moment for Maybank. For the first time, artworks that have long been part of our institutional spaces are brought together and presented to the public in a dedicated exhibition setting.

Over several decades, Maybank has acquired and received artworks by Malaysian artists, many of which have quietly inhabited our buildings and workspaces. Often encountered in passing, these works have formed part of our everyday environment – seen, perhaps felt, but rarely engaged with in depth. With MACE, we felt it was timely to reconsider our role as custodians of this collection, and to acknowledge that preservation alone is not enough. There is value, and indeed responsibility, in curating thoughtfully and sharing more openly.

At its core, MACE is about access and stewardship. It reflects our commitment to making these works accessible beyond institutional walls, while respecting the artists, their practices, and the public who engage with them. Through careful curation, the exhibition seeks to situate the collection within Malaysia's modern and contemporary art landscape, allowing the works to be seen, studied, and appreciated in new contexts.

This inaugural exhibition unfolds over nine weeks and is presented in **three rotating cycles, featuring a total of 90 artworks**. The cyclical format allows a broader representation of the collection to be shown over time and encourages repeated visits for deeper engagement and reflection.

MACE is not conceived as a one-off initiative. Rather, it marks the beginning of a longer-term platform, one that we hope will continue to evolve through different curatorial approaches, expand its educational role, and foster greater engagement with students, artists, and the wider public.

Through Maybank Foundation, and particularly the **Balai Seni Art Series (BSAS)**, our work in arts and culture has been anchored in **building ecosystems that support creativity, empower communities, and enable long-term impact**. MACE is a natural extension of this commitment, expressed through the stewardship and sharing of art. Over the past three decades, BSAS has **supported more than 6,399 local and international art beneficiaries** through over **40 thematic exhibitions**, presented across both physical and virtual platforms.

It is my hope that this exhibition invites visitors to slow down, to spend time with the works, and to experience the collection as it unfolds over the coming weeks. We are pleased to finally open this collection to the public, and we look forward to the conversations, reflections, and connections that MACE will inspire.

#MaybankFoundation
#EmpoweringCommunitiesAcrossASEAN
#Maybank4ASEAN



THE MAYBANK ART COLLECTION EXHIBITION: HELD IN TIME, BUILT ON TRUST

The Maybank Art Collection Exhibition (MACE) presents to the public a body of works shaped through decades of deliberate collecting by one of Malaysia's most enduring financial institutions, reflecting an approach rooted in long-term stewardship and sustained engagement with artistic practice.

As Maybank expanded alongside the nation's economic and social development, the collection grew in parallel. Many works were acquired at formative stages in artists' careers, reflecting moments when institutional conviction and support played a meaningful role in enabling artistic production. Over time, these works have accrued significance through continued care and the changing conditions in which they are viewed.

At the centre of MACE is the theme 'Held in Time, Built on Trust,' which reflects the long-term commitment behind the formation of the collection.

It speaks to the act of holding and caring for artworks across changing contexts, and to the trust placed in artists and in the lasting value of creative practice. The theme frames the collection as a living body of work shaped through continuity, stewardship, and public engagement.

Reflecting on the exhibition's framing, MACE curator, Ts. Liu Cheng Hua notes: *"Time allows art to settle into meaning, while trust sustains its presence. This exhibition frames the collection not as a static accumulation, but as a continuum shaped by belief, responsibility, and long-term cultural care."*

Presented publicly at this scale for the first time, the collection enters a shared space of encounter. Viewed collectively, the works offer insight into evolving ideas of identity, modernity, memory, and belonging within Malaysia's cultural landscape.

THE SIGNIFICANCE OF THE MAYBANK ART COLLECTION EXHIBITION: HELD IN TIME, BUILT ON TRUST

For the first time, Maybank is opening its art collection to the public through the Maybank Art Collection Exhibition: Held In Time, Built On Trust (MACE).

For many years, artworks held within institutions have often been encountered only in fragments, seen in offices or public spaces, but rarely experienced in a dedicated exhibition setting. MACE brings these works together in a curated environment that allows for closer viewing, reflection, and public engagement, inviting audiences to encounter the collection more intentionally over time.

Presented in cycles over the exhibition period, the exhibition encourages visitors to engage with the works in parts and to consider how artistic expression evolves across generations and contexts.

MACE frames the Maybank art collection as a responsibility held in stewardship over the long term, now shared openly with the public in the spirit of access, care, and trust.



HELD IN TIME, BUILT ON TRUST:

REFLECTIONS FROM THE CURATOR

The inaugural Maybank Art Collection Exhibition (MACE) marks a significant milestone in the history of the collection, inviting audiences to encounter artworks that have quietly accompanied Maybank's journey across decades. Anchored by the theme "Held in Time, Built on Trust", the exhibition brings together selected works acquired by the institution, reflecting on how belief, care, and responsibility shape the life of a collection.

The artworks, gathered at different moments and under different conditions, share a common thread: a sustained commitment to supporting artistic practice through time. As art historian T.K. Sabapathy observes, *"Art in Malaysia is never detached from the conditions of its time; it is shaped by history, place, and lived experience."* Seen through this lens, the collection may be read as a layered visual record of Malaysia's evolving cultural, social, and artistic landscape.

The works in this exhibition are approached as markers of continuity. Some reflect moments of experimentation and transition; others carry the weight of experience and accumulated meaning. Seen together, they trace shifts in artistic language, cultural concerns, and social memory, while remaining grounded in the material presence of the artworks themselves.

Time plays a central role in how the collection is understood. Meaning does not arrive immediately; it settles, deepens, and evolves. Through sustained care and conservation, these works have remained present as contexts changed around them. Trust, in turn, is expressed through the act of holding, through belief in artists and in the enduring value of creative expression. In the words of international curator Hans Ulrich Obrist, *"Collections are not static repositories, but living organisms that grow through interpretation and dialogue."*

By showcasing the Maybank Art Collection to the public, this exhibition extends an invitation to share in a collective cultural memory. It is offered as a space for reflection, dialogue, and renewed engagement with art as something shaped over time, sustained through trust, and carried forward through responsibility. This affirms Maybank's role not only as an institution of financial stewardship, but as a committed custodian of cultural legacy.

TS. LIU CHENG HUA

Curator,

The Maybank Art Collection Exhibition:
Held In Time, Built On Trust



ABOUT THE CURATOR

TS. LIU CHENG HUA

Ts. Liu Cheng Hua is a multidisciplinary artist, educator, and curator with more than two decades of engagement in the Malaysian art landscape. He currently serves as Head of the Fine Art Department cum Head of Administration and a senior lecturer at the Malaysian Institute of Art (MIA) and is recognised as a leading figure within Malaysia's multidisciplinary art scene.

Originally trained as a sculptor, his practice works extensively with metal, fibreglass, casting, and industrial materials, and has expanded to include neon, LED, UV, and light-based installations. His artworks frequently draw from historical research, particularly narratives rooted in Perak, engaging with tin mining legacies, secret societies, and figures from Malaysia's colonial past. Across media, his work positions art as a tool for reflection, awareness, and social inquiry.

As a curator, Liu Cheng Hua is known for shaping exhibitions that connect artistic practice with broader social and historical contexts. His curatorial projects include cross-border collaborations such as the Malaysia-Indonesia Bilateral Art Exhibition 2.0 (2017) and historically grounded exhibitions like Wartikah (2014) with the National Archives of Malaysia and serves as a Guest Writer for "RANTAU: Indonesia-Malaysia-Thailand, Growth Triangle" under National Art Gallery of Malaysia (2024). These projects reflect his interest in continuity, cultural memory, and the role of institutions in sustaining artistic practice over time.

This curatorial approach shapes in time, continuity, and responsibility in framing the Maybank Art Collection as a living archive. Featuring selected works acquired from the 1980s to the present, the exhibition traces how art has accompanied Malaysia's evolving social, cultural, and economic landscape, positioning Maybank as a long-term cultural custodian rather than a short-term collector.

Liu Cheng Hua's artworks have been exhibited internationally across Asia and Europe, and are held in collections including the National Art Gallery of Malaysia, Galeri Seni Johor, and various corporate and private collections. In 2022, two of his artworks were featured in the Ministry of Education's SJKC Standard 6 textbooks. His curatorial approach is informed by this dual perspective, as both artist and educator, balancing intellectual rigour with public accessibility.



A LEGACY IN PRACTICE:
**MAYBANK, BALAI SENI
& THE ARTS**

Since its establishment in 1960, Maybank has grown alongside Malaysia's economic development, while cultivating a long-standing engagement with the arts. This commitment became publicly visible in the 1980s with the establishment of Balai Seni Maybank at Menara Maybank, Kuala Lumpur, one of Malaysia's earliest corporate art galleries in 1988. Art exhibition activities at the venue were already underway by the late 1980s, with exhibitions such as the *Pameran Burung Batik* held in February 1989.

Emerging during a formative period for Malaysia's art ecosystem when galleries were limited and the commercial market was still developing, Balai Seni Maybank offered artists a rare institutional platform for exhibition and exchange. Over time, it became a site of continuity where artistic practices could unfold beyond immediate market pressures, supported through sustained programming and acquisition.

Under Maybank Foundation, this commitment was further strengthened through the introduction of the Balai Seni Art Series (BSAS), which began operating as a structured programme around 2018. Since then, BSAS has supported local artistic practices through more than 40 exhibitions, alongside related initiatives such as the MyTIGER Values Art Competition (MTVAC), the Cultural Art Showcase & Bazaar (CASB), and the Maybank Foundation Artist Fellowship Programme (MFAFP). Together, these programmes promote artistic development, cultural expression, and public engagement, providing platforms for both emerging and established artists.

The Maybank Art Collection, built through decades of careful acquisition and stewardship, forms part of this broader cultural commitment. Presented under the theme "Held in Time, Built on Trust", the collection reflects a sustained belief in art as a living cultural resource which is shaped over time, maintained through care, and shared through ongoing engagement with the public.



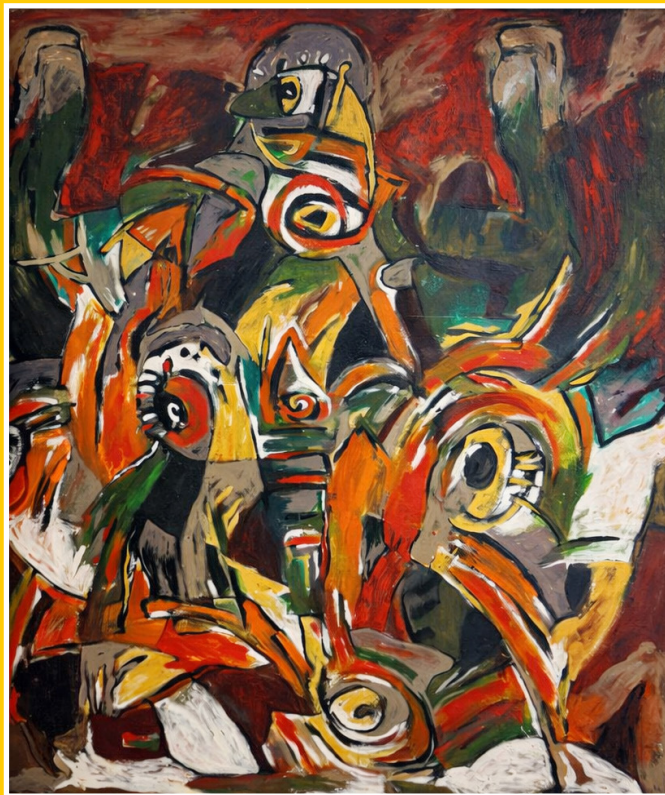
SERIES I

*ARTISTS
FEATURED
IN THIS EXHIBITION*

Ahmad Fuad Osman
Ahmad Khalid Yusof
Ahmad Shukri Mohamed
An Yunji
Awang Damit Ahmad
Dato' Chong Hon Fatt
Dato' Sharifah Fatimah Syed Zubir
Datuk Ibrahim Hussein
Datuk Syed Ahmad Jamal
Din Omar
Dr. S. Chanthiran
Dr. Sulaiman Esa
Hadi Salleh
Hamir Soib Mohamed
Ismail Abdul Latiff
Ismail Mat Hussin
Khalil Ibrahim
Kim Hai Lim
Latiff Mohidin
Lee Kian Seng
Long Thien Shih
Lucy Liew
Lum Weng Keong
Mastura Abdul Rahman
Mohd Sanip Lasman
Rahime Harun
Raja Azhar Idris
Soh Boon Kiong
Victor Chin
Yusri Sulaiman

AHMAD FUAD OSMAN
COCKFIGHTING

159cm x 128cm
Oil on Canvas
1993



AHMAD KHALID YUSOF
SIRI DOKUMENTASI

153cm x 153cm
Acrylic on Canvas
1992



AHMAD SHUKRI MOHAMED
PASAR BESAR SITI KHADIJAH

54.7cm X 70.5cm
Watercolour on Paper
1990



AN YUNJI
FROM ONE MULTIPLY TO MILLIONS

86cm x 170cm
Chinese Ink on Rice Paper
2003



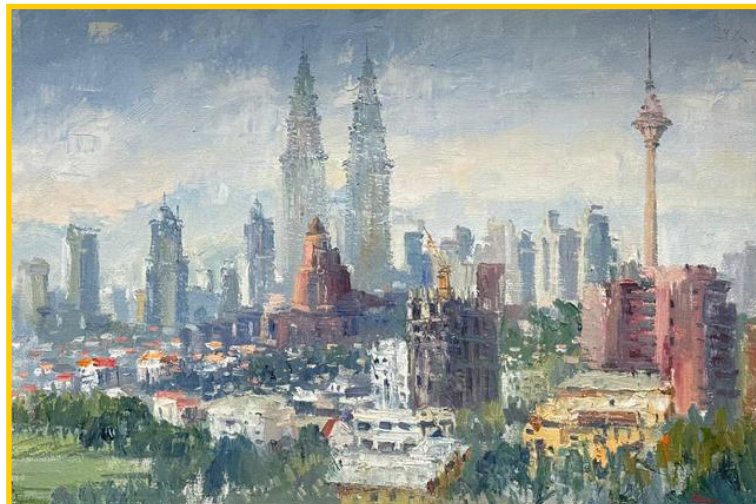
AWANG DAMIT AHMAD
MARISTA – SISA SEMUSIM I

102.5cm x 94.5cm
Mixed Media on Canvas
1996



*DATO' CHONG HON FATT
VIEW OF KL #2*

86.5cm x 116cm
Oil on Canvas
1997



DATO' SHARIFAH FATIMAH SYED ZUBIR
THE LINK

92cm x 92cm
Acrylic on Canvas
1992



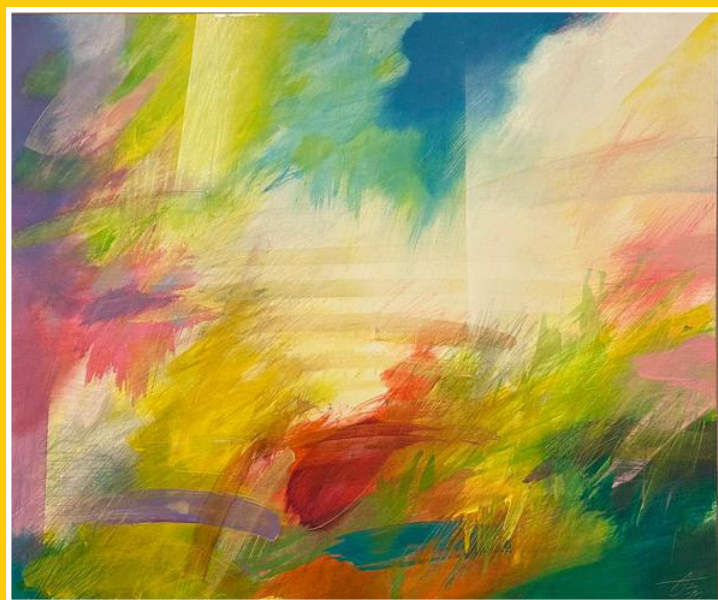
*DATUK IBRAHIM HUSSEIN
MEGAWATI 78*

152cm x 152cm
Acrylic on Canvas
1978



DATUK SYED AHMAD JAMAL
WARNA GARIS

92cm x 107cm
Acrylic on Canvas
1992



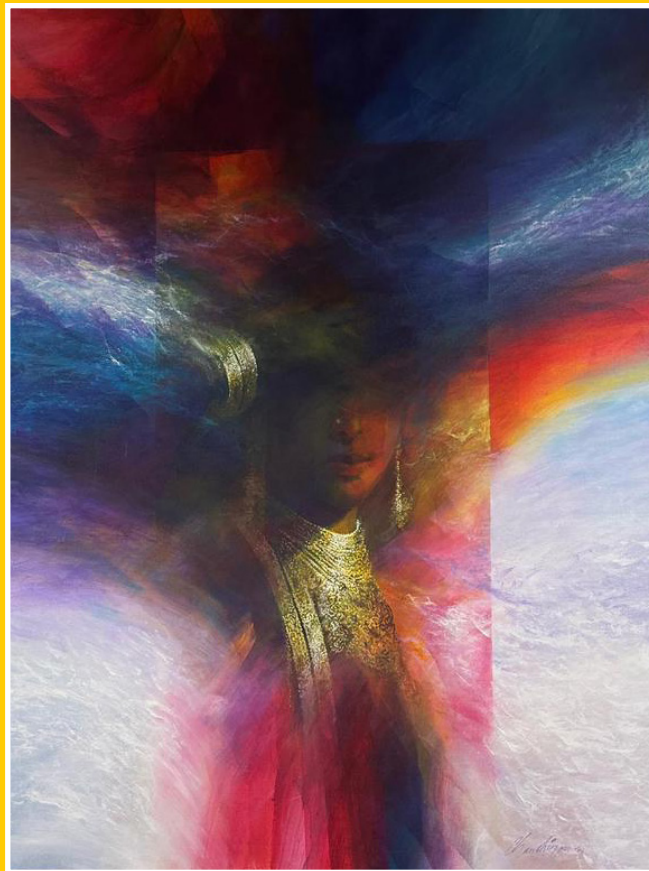
DIN OMAR
GOLDEN COMBS I

32cm x 32cm
Acrylic on Board
2003



DR. S. CHANTHIRAN
BEYOND 1

92.3cm x 123cm
Acrylic on Canvas
1994



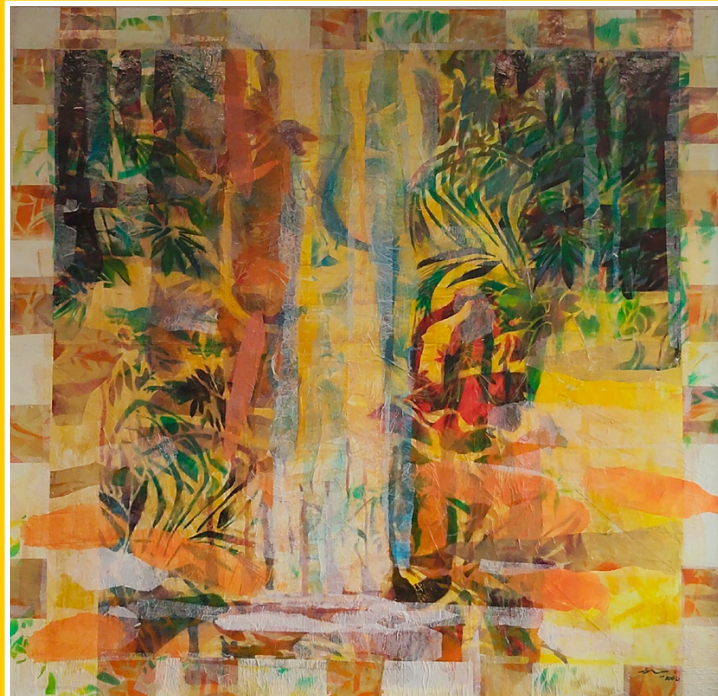
DR. SULAIMAN ESA
DARI GUNUNG KE GUNUNGAN

84cm x 146cm
Mixed Media on Canvas
1993



HADI SALLEH
WATERFALL 1

174cm x 179.3cm
Mixed Media on Canvas
2004



HAMIR SOIB MOHAMED
MY MOTHER WAS A RUBBER TAPPER I

156cm x 123.5cm
Oil on Canvas
1993



ISMAIL ABDUL LATIFF
TIOMAN PASSION

138cm x 181cm
Mixed Media on Canvas
1992



ISMAIL MAT HUSSIN
PEREMPUAN PASAR (PISANG)

113.5 x 114.5cm
Batik on Cotton Fabric
1996



KHALIL IBRAHIM
FESTIVAL OF COLOUR

980cm x 100.5cm
Watercolour on Paper
1996



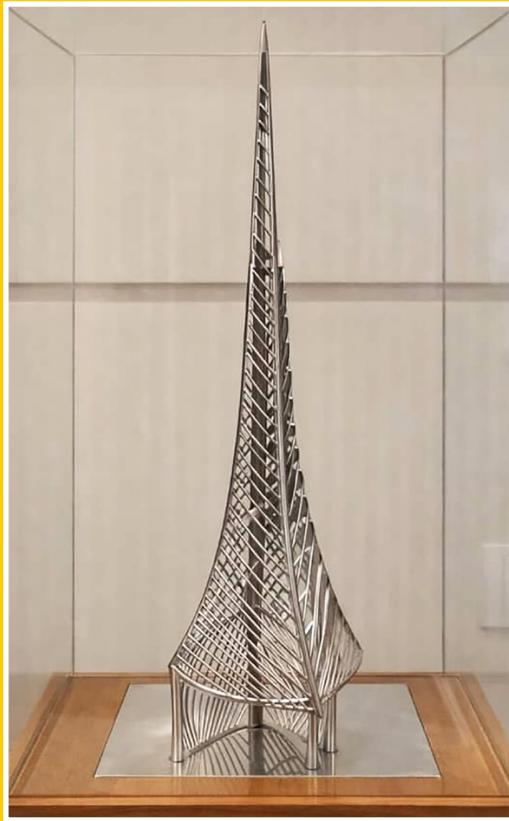
KIM HAI LIM
DAWNING RAY

72cm x 52cm
Oil on Linen
1991



LATIFF MOHIDIN
KERIS

Steel Sculpture



LEE KIAN SENG
HEAVEN & EARTH 25

94cm x 124cm
Dye on Fabric
1998



LONG THIEN SHIH
CITYSCAPE – KUALA LUMPUR

130cm x 210cm
Acrylic on Canvas
1988



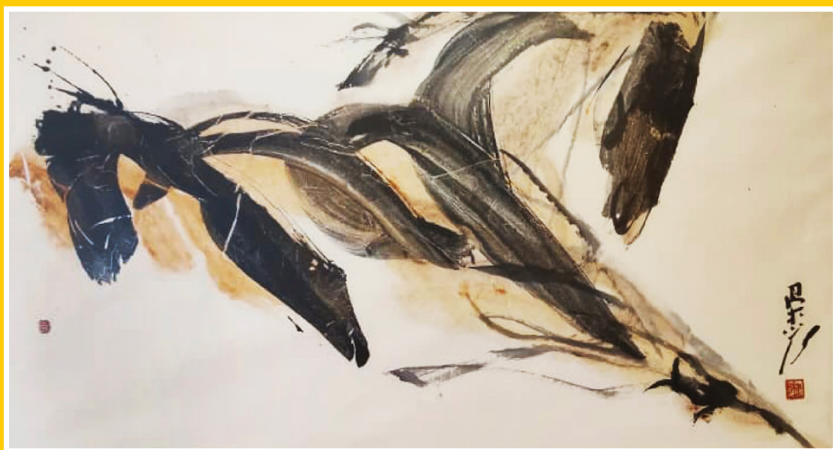
LUCY LIEW
HORNBILL '92

110 x 100cm
Oil on Canvas



LUM WENG KEONG
GALLOPING HORSE

135cm x 68cm
Chinese Ink on Paper
2006



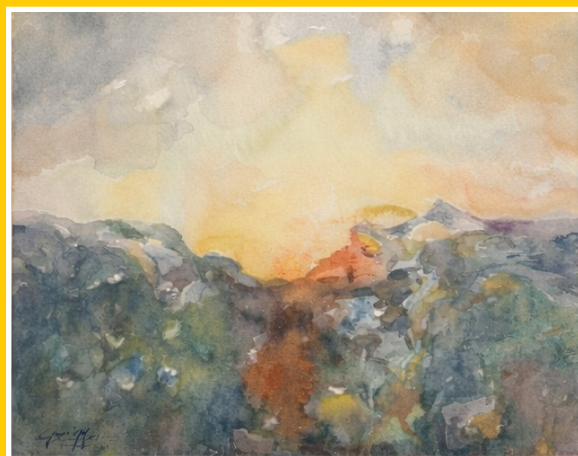
MASTURA ABDUL RAHMAN
INTERIOR NO. 28

33.5cm x 49.5cm
Acrylic on Canvas
1988



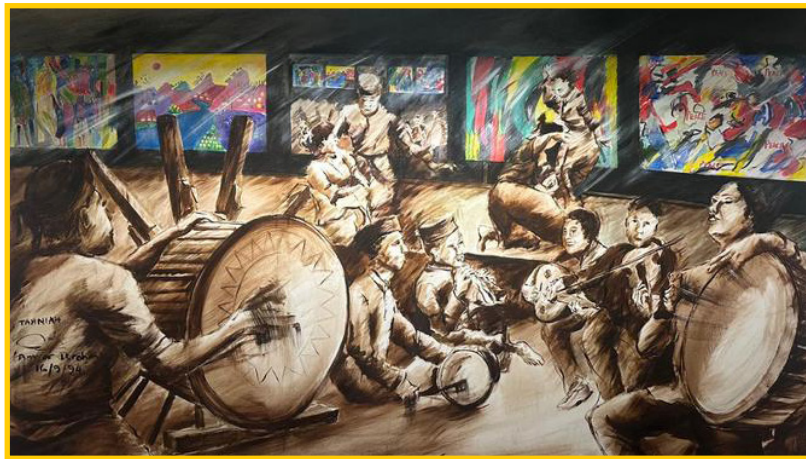
MOHD SANIP LASMAN
SUNRISE

61.5cm x 71.5cm
Watercolour on Paper
2003



RAJA AZHAR IDRIS
MALAM KARYAWAN

127cm x 79cm
Oil on Canvas
1995



SOH BOON KIONG
GREEN

126.5cm x 87cm
Acrylic on Canvas
1995



VICTOR CHIN
89, JALAN BANDAR (HIGH STREET),
KUALA LUMPUR

59cm x 48.5cm
Pen and Pencil Colour
1996



YUSRI SULAIMAN
KEMELUT MUARA 16

128cm x 128.5cm
Mixed media on Canvas
2002



Explore upcoming MACE artworks on
the Maybank Foundation website,
and follow Maybank Foundation on
Instagram for the latest updates.



www.maybankfoundation.com



[@maybankfoundation](https://www.instagram.com/maybankfoundation)

MAYBANK'S KEY MOMENTS THROUGH TIME

1960s A HOMEGROWN BANK BEGINS

Maybank opened its first branch in Jalan Tun H S Lee, Kuala Lumpur, as **Malaysia's first local bank.**

Focus on accessibility and empowering communities; the growth of the nation and its people continues to drive Maybank's purpose.

Nicknamed the **"coffee-shop bank"** due to branches in shop lots or near coffee shops.

Early initiatives included financial literacy education and manual, people-centered banking.

1970s PARTNERING IN NATION-BUILDING

Expanded nationwide with **126 branches by 1975**, providing home loans, small business financing, and agricultural support.

Introduced **mobile banking buses** to reach rural communities.

Scholarships and study assistance programmes launched to nurture future Malaysian talents.

Supported rural economic development through targeted credit schemes and field officers.

MAYBANK'S KEY MOMENTS THROUGH TIME

1980s

MODERNISATION, TECHNOLOGY, AND ARTS

Introduced Malaysia's first ATM,
Maybank Kawanku.

Launched the first
Malaysian credit cards:
**Maybank Visa Classic and
Visa Premier.**

Early adoption of computers in
banking operations; upskilling
employees for technological change.

Founded Balai Seni Maybank,
one of Malaysia's earliest corporate
galleries, as a platform for exhibitions,
dialogue, and artistic exchange.

1990s

REGIONAL EXPANSION AND COMMUNITY DEVELOPMENT

Expanded across ASEAN,
establishing branches in
Singapore, Indonesia, and
beyond.

Launched **Maybank
Autophone**, Malaysia's first
phone banking service.

Maybank Foundation's predecessor,
**Tabung Kebajikan Kumpulan
Maybank (TKKM)**, was established
as a trust fund to provide medical
assistance and social welfare support
to the community.

Supported **regional financial
stability** during the 1997 Asian
Financial Crisis.

MAYBANK'S KEY MOMENTS THROUGH TIME

2000s INNOVATING FOR COMMUNITIES

Maybank **bridged a gap in Islamic banking** by becoming ASEAN's first bank to offer an Islamic window through Maybank Islamic Berhad.

Launched **Maybank2u Pay** to provide consumers with a convenient and reliable platform for **seamless online transactions**.

Maybank2e.net portal made its debut and became **a key online cash management and transaction platform** supporting SME customers.

2010s DIGITAL TRANSFORMATION AND INCLUSIVE GROWTH

Advanced digital banking with online platforms, mobile apps, and biometric authentication.

Maybank Foundation was officially inaugurated in conjunction with the **Maybank Group's 50th anniversary** expanding its impact across education, arts, community and environment.

Introduced **Maybank@Campus** and **Mspace**, combining financial literacy, services, and cultural engagement for students and young adults.

Launched **FutureReady**, a digital upskilling programme for employees, ensuring workforce readiness in the digital era.

Launched **MAE (Maybank Anytime Everyone)**, an intuitive e-wallet within the Maybank2u app to enhance consumer convenience.

MAYBANK'S KEY MOMENTS THROUGH TIME

2020s THE DECADE OF DIGITAL HUMANITY

Maybank introduced Malaysia's **first end-to-end digital SME financing**, delivering approvals in as fast as 10 minutes.

Malaysia's **first Social Impact Deposit** enabled customers to grow their savings while supporting communities affected by the COVID-19 pandemic.

Through the **Sama-sama Lokal Micro Adoption Programme**, Maybank helped local microenterprises digitise, upskill and regain economic footing.

Maybank pioneered **Malaysia's first contactless ATM cash withdrawal**, allowing customers to access cash via QR code on the MAE app.

Cross-border QR payments empowered seamless, cashless transactions for Maybank customers and regional travellers across Southeast Asia.

MAYBANK'S KEY MOMENTS THROUGH TIME

Maybank continues to reinforce its position as a trusted institution by advancing digital banking and innovation, strengthening access, reliability, and everyday financial engagement across ASEAN.

At the same time, Maybank sustains its long-term commitment to social impact and sustainability, deepening support for communities through responsible stewardship and shared value.

As the decade unfolds, Maybank's journey continues, hand in hand with communities, towards truly Humanising Financial Services.

TRANSFORMING LIVES ACROSS ASEAN



Maybank Foundation, the **social impact arm of the Maybank Group**, addresses regional community needs by generating meaningful, measurable, and long-term positive impacts for the communities it serves across ASEAN. To date, Maybank Foundation has touched more than **644,900 lives**, and its efforts remain strong. In 2021, Maybank Foundation received accreditation status as an entity associated with ASEAN in recognition of its community efforts across the region — the second corporate foundation to be accorded this honour.

Through its regional flagship initiatives, the foundation aims to uplift ASEAN communities, creating a more equitable society by empowering individuals with lifelong financial skills and knowledge, addressing immediate needs, and building financial resilience for sustainable livelihoods. The foundation currently focuses on three main pillars: **Community Empowerment, Empowering Education, and Environmental Diversity, with six flagship programmes** operating alongside other core programmes that fall under its community investment activities.

 @maybankfoundation

 @maybankfoundation

ABOUT
KAKISENI

Since it was founded in 2001, Kakiseni has been at the heart of Malaysia's cultural scene, supporting both artists and audiences. As the country's first dedicated arts platform, we are committed to growing the creative community and deepening public engagement with the arts.



Artist Development

We are deeply invested in the empowerment of Malaysian artists across disciplines – from theatre and dance to visual arts and interdisciplinary performance. Through grants, mentorship programmes, residencies and professional development workshops, Kakiseni provides emerging and established artists with the tools, platforms and networks they need to thrive.

By curating performance opportunities and facilitating collaborations, Kakiseni ensures Malaysian voices are represented in regional and international conversations. To date, over 5,000 art practitioners have benefitted from Kakiseni's initiatives, many of whom have gone on to receive national and global recognition.

Audience Development

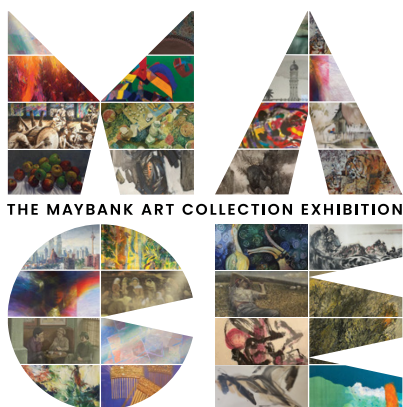
Kakiseni's vision of making the arts a part of everyday life is driven by a commitment to building inclusive, informed and enthusiastic audiences.

From flagship festivals like The Other Festival, Ipoh and Kakiseni International Arts Festival, to artist-in-school programmes nationwide – Kakiseni engages over 100,000 audience members across urban and rural settings.

We prioritise cultural literacy and participatory experiences, offering workshops, talks and interactive performances to demystify the arts and break down barriers to engagement. In addition, our digital platforms continue to serve as vital spaces for promotion, discovery and community dialogue.

Through holistic and sustained efforts, Kakiseni not only supports the growth of individual artists but also fosters a vibrant arts ecosystem where creators and audiences can mutually inspire one another.





MAYBANK FOUNDATION © PUBLISHER
ARTISTS © ARTWORK IMAGES

Published by
MAYBANK FOUNDATION
Malayan Banking Berhad (3813-k)
4th Floor, Maybank Tower,
100, Jalan Tun Perak, 50050
Kuala Lumpur

WWW.MAYBANKFOUNDATION.COM

MAYBANK FOUNDATION

Ahmad Fuad Osman
Ahmad Khalid Yusof
Ahmad Shukri Mohamed
An Yunji
Awang Damit Ahmad
Dato' Chong Hon Fatt
Dato' Sharifah Fatimah Syed Zubir
Datuk Ibrahim Hussein
Datuk Syed Ahmad Jamal
Din Omar
Dr. S. Chanthiran
Dr. Sulaiman Esa
Hadi Salleh
Hamir Soib Mohamed
Ismail Abdul Latiff
Ismail Mat Hussin
Khalil Ibrahim
Kim Hai Lim
Latiff Mohidin
Lee Kian Seng
Long Thien Shih
Lucy Liew
Lum Weng Keong
Mastura Abdul Rahman
Mohd Sanip Lasman
Rahime Harun
Raja Azhar Idris
Soh Boon Kiong
Victor Chin
Yusri Sulaiman



www.maybankfoundation.com



www.kakiseni.com